

H2020 MINLAND

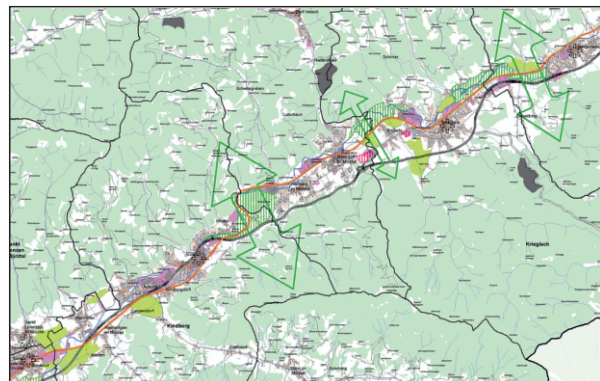
MINERALS AND LAND USE

MINERAL RESOURCES IN SUSTAINABLE LAND USE PLANNING

Raw materials and mineral resources play a crucial role in people's everyday lives and economic activities on different spatial levels. Thus, sustainable supply and access to raw materials are considered crucial for economic stability and prosperity and is addressed in numerous EU and Member States policies. Different policies on EU level are addressing the nexus between mineral policy and land-use planning, addressing following barriers:

- Identification of safeguarding measures, to secure the future demand by domestic supplies
- In-effectivity of mineral resource policy, due to dispersed location unbalanced coordination between different levels of government, weak horizontal and cross-sectorial integration even in just recently designed and thus 'modern' mineral policies
- Land-use planning systems and regulation should be better linked to mineral policies
- Practises and procedures of valuation of different land-use options

Private and public interest related to land must be balanced. In land-use planning those balancing and valuation of land is taking place;



dealing with the scarcity of land according to politically and societally defined goals, objectives and societally agreed values. (e.g. natural, societal values).

MINLAND project is addressing these gaps and is investigating land policies and governance arrangements and their capacity to integrate minerals in land-policies and land-use planning instruments. The research is based on an institutional analysis, mapping institutions and governance arrangements to gain in-depth understanding of the nexus between land-use and mineral resources. The analysis is complemented by stakeholder workshops, bringing together actors from different policy streams and levels (government, NGOs, businesses) to learn from each other's' perspectives and experiences to develop suggestions for improved policy integration and sustainable land-use planning practises.



Katharina **GUGERELL**
Senior Researcher
Mining Policies and Sustainability
katharina.gugerell@unileoben.ac.at



Michael **TOST**
Senior Researcher
Mining Policies and Sustainability
michael.tost@unileoben.ac.at

FURTHER INFORMATION
AND PROJECT RESULTS
CAN BE FOUND AT
[HTTP://WWW.MINLAND.EU](http://www.minland.eu)

MinLand

